



2023



TRU-SCAPES[®]
LED LANDSCAPE LIGHTING

Hardscape Lights with Replaceable LED Bar

Our professional grade low voltage LED hardscape step and wall lights are constructed of a powder coated aluminum bracket with an easy replaceable LED light bar. Use any light bar option on any unit. Highlight steps, walls, and outdoor kitchens.



ITEMS INCLUDED:

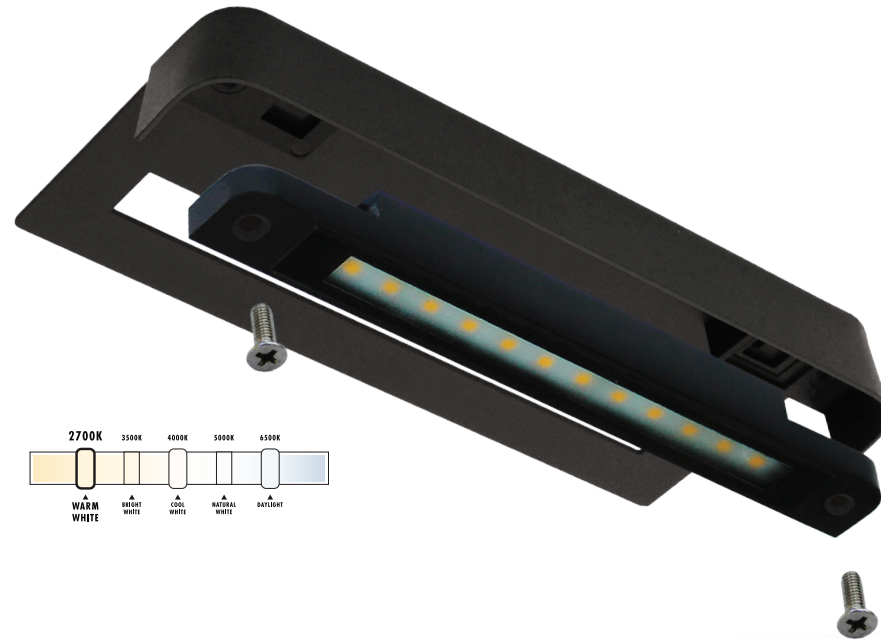
- Silicone Wire Nuts
- Lead Wire: 60"

LIGHTING SPECIFICATIONS:

- Construction: Powder Coated Aluminum
- TS-A6000 & TS-A6000C Finishes: Black or Bronze
- TS-MA6000GRY Finish: Gray
- Light Source: Interchangeable Integrated LED Modules
- Voltage Range: 9V – 15V AC/DC
- Power Supply: 12V Low Voltage Transformer (Sold Separately)

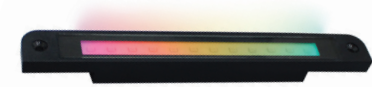
HARDSCAPE LIGHTS

– REPLACEABLE (COLOR OR WHITE) LED MODULES –



TRADITIONAL HARDSCAPE LIGHT TS-A6000

Dimensions: 7-1/8"(L) x 3"(W) x 7/8"(H)
Color Temp (CCT): 2700K
Watts: 1W
Lumens: 75
CRI: >80



RGBCW HARDSCAPE LIGHT TS-A6000C

Features Bluetooth control of full color wheel, Kelvin temperature, and dimming capability.
Dimensions: 7-1/8"(L) x 3"(W) x 7/8"(H)
Color Temp (CCT): 2200K – 6500K
Watts: 1W
Lumens: Variable/Dimming



Tru-Scapes
Color Control

MODERN HARDSCAPE LIGHT TS-MA6000GRY

Dimensions: 7-1/8"(L) x 3"(W) x 7/8"(H)
Color Temp (CCT): 4000K
Watts: 1
Lumens: 78
CRI: >80

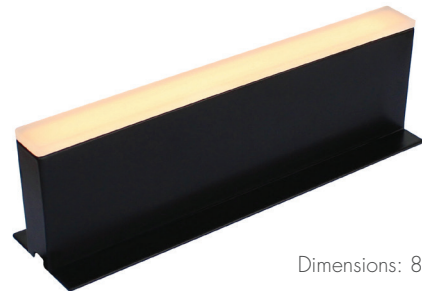
PAVER LIGHTS



TRADITIONAL
WARM WHITE

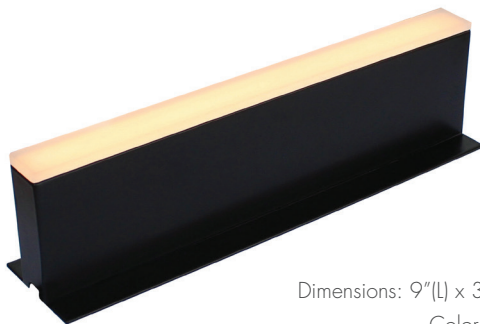
TS-HPL-6

Dimensions: 6"(L) x 3/4"(W) x 2-3/8"(H)
Color Temp (CCT): 2700K
Watts: 1.5W
Lumens: 35



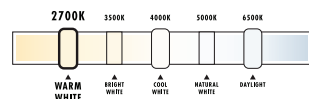
TS-HPL-8

Dimensions: 8"(L) x 3/4"(W) x 2-3/8"(H)
Color Temp (CCT): 2700K
Watts: 1.8W
Lumens: 45



TS-HPL-9

Dimensions: 9"(L) x 3/4"(W) x 2-3/8"(H)
Color Temp (CCT): 2700K
Watts: 2.5W
Lumens: 60



MODERN STYLE
COOL WHITE

TS-MHPL-6

Dimensions: 6"(L) x 3/4"(W) x 2-3/8"(H)
Color Temp (CCT): 4000K
Watts: 1.5W
Lumens: 42



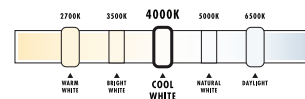
TS-MHPL-8

Dimensions: 8"(L) x 3/4"(W) x 2-3/8"(H)
Color Temp (CCT): 4000K
Watts: 1.8W
Lumens: 52



TS-MHPL-9

Dimensions: 9"(L) x 3/4"(W) x 2-3/8"(H)
Color Temp (CCT): 4000K
Watts: 2.5W
Lumens: 60



Illuminate your Hardscape Borders with Easy to Install Paver Lights

The paver lights are available in 6", 8" & 9" lengths designed to fit along sailor or soldier course borders of patios, walkways, and driveways.



ITEMS INCLUDED:

- Silicone Wire Nuts
- Lead Wire: 36"

LIGHTING SPECIFICATIONS:

- Construction: Powder Coated Aluminum with Frosted Acrylic Lens
- Finish: Black or Gray
- Light Source: Integrated LED's
- Voltage Range: 10V – 15V AC/DC
- Power Supply: 12V Low Voltage Transformer (Sold Separately)

Patent Pending

PILLAR LIGHTS



**TRADITIONAL PILLAR LIGHT
TS-PL100-BRZ**

Dimensions: 9"(L) x 9"(W) x 20"(H)
Watts: 3W (G4 LED Lamp)
Lumens: 300



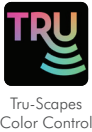
**MODERN PILLAR LIGHT
TS-PL101-BRZ or TS-PL101-BLK**

Dimensions: 9"(L) x 9"(W) x 18"(H)
Watts: 3W (G4 LED Lamp)
Lumens: 300



**NOBLE PILLAR LIGHT
TS-PL102-BRZ**

Dimensions: 11"(L) x 11"(W) x 19-7/8"(H)
Watts: 6W (Replaceable Bluetooth RGBCW LED)
Lumens: 250 at 2700K



More for Your Hardscape

Utilize a Tru-Scapes low voltage pillar light with an antique brushed bronze finish and frosted heat resistant glass to beautify natural stone or concrete pillars. This fixture will add a soft inviting glow to any outdoor living space.

ITEMS INCLUDED:

- Silicone Wire Nuts
- LED Light Source
- Lead Wire: 36"
- Mounting Base
- Masonry Drill Bit and Template
- Anchor Kit

LIGHTING SPECIFICATIONS:

- Construction: Powder Coated Aluminum & Frosted Tempered Glass
- Finishes: Antique Brushed Bronze (BRZ) or Black (BLK)
- Power Supply: 12V Low Voltage Transformer (Sold Separately)

TS-PL100 & TS-PL101:

- Color Temp (CCT): 2700K
- Voltage Range: 9V – 15V AC/DC
- Mounting Plate: 5.5" x 5.5"

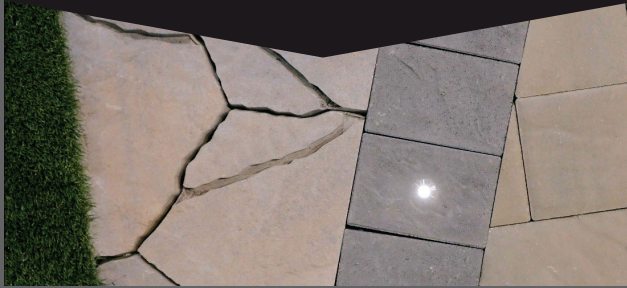
TS-PL102:

- Color Temp (CCT): 2200K – 6500K
- Voltage Range: 10V – 15V AC/DC
- Mounting Plate: 10.25" x 10.25"



Eye-Catching Flush Mount Dot Lights to Light Your Hardscape

Tru-Scapes Low Voltage LED Dot Lights are designed with a fully sealed AES plastic housing and a frosted lens. Available in 1.5" and 2.5" with warm white, cool white and RGBCW. Easily installed in concrete, stone, wood, or composite decking with a 1" or 2" core drill bit.



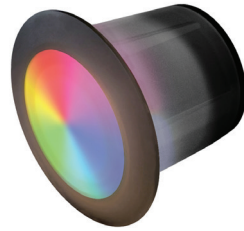
ITEMS INCLUDED:

- Silicone Wire Nuts
- Lead Wire: 36"

LIGHTING SPECIFICATIONS:

- Construction: Fully Sealed AES Housing with 1.5" or 2.5" OD Ring
- Finish: Anodized Bronze Ring or Stainless Steel Ring
- Light Source: Integrated LED
- Light Beam: 60°
- Voltage Range: 10V – 15V AC/DC
- Power Supply: 12V Low Voltage Transformer (Sold Separately)

RGBCW COLOR CHANGE CAPABILITY



TS-25DOTC-BRZ

Size: 2.5"(L) x 2.5"(W) x 2"(H)
Finish: Anodized Bronze Ring
Color Temp (CCT): 2200K – 6500K
Watts: 1.5W
Lumens: 60



TS-M25DOTC-SS

Size: 2.5"(L) x 2.5"(W) x 2"(H)
Finish: 316 Stainless Steel Ring
Color Temp (CCT): 2200K – 6500K
Watts: 1.5W
Lumens: 60

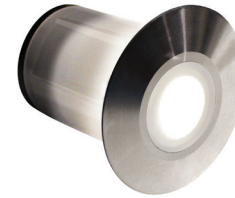


Tru-Scapes
Color Control

DOT LIGHTS

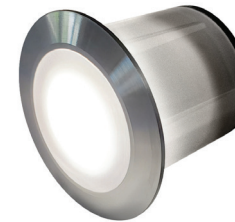


MODERN STYLE COOL WHITE



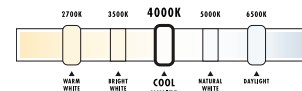
TS-M15DOT-SS

Size: 2.5"(L) x 2.5"(W) x 2"(H)
Finish: 316 Stainless Steel Ring
Color Temp (CCT): **4000K**
Watts: 0.2W
Lumens: 13

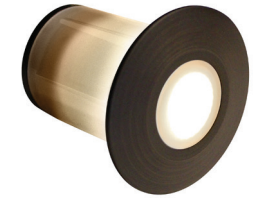


TS-M25DOT-SS

Size: 2.5"(L) x 2.5"(W) x 2"(H)
Finish: 316 Stainless Steel Ring
Color Temp (CCT): **4000K**
Watts: 1.2W
Lumens: 105



TRADITIONAL WARM WHITE



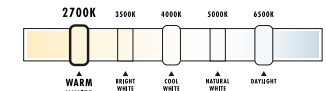
TS-15DOT-BRZ

Size: 1.5"(L) x 1.5"(W) x 1.625"(H)
Finish: Anodized Bronze Ring
Color Temp (CCT): 2700K
Watts: 0.2W
Lumens: 10



TS-25DOT-BRZ

Size: 2.5"(L) x 2.5"(W) x 2"(H)
Finish: Anodized Bronze Ring
Color Temp (CCT): 2700K
Watts: 1.2W
Lumens: 90



WELL LIGHTS

– AVAILABLE IN BLACK OR BRONZE –



HIGH POWER IN-GROUND WELL LIGHT

TS-B201

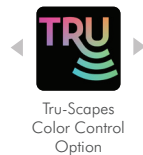
Light Beam: 120°
Watts: 8W (PAR36)
Size: 5.5"(Dia.) x 9.625"(H)
Lumens: 900



IN-GROUND WELL LIGHT

TS-B203

Light Beam: 60°
Watts: 4W (MR16)
Size: 4"(Dia.) x 6.875"(H)
Lumens: 250



Showcase Your Property with In-ground Lighting

These low voltage LED landscape well lights are heavy-duty complete with lamp. The watertight composite in-ground housing reveals a brass lid above the surface. Use to highlight focal points such as plants, walls, statues or structures.



ITEMS INCLUDED:

- Silicone Wire Nuts
- LED Lamp
- Lead Wire: 36"

LIGHTING SPECIFICATIONS:

- Construction: Brass & Composite
- Finish: Black or Bronze
- Color Temp (CCT): 2700K
- Voltage Range: 9V – 15V AC/DC
- Power Supply/Voltage: 12V Low Voltage Transformer (Sold Separately)

PATH LIGHTS

– AVAILABLE IN BLACK OR BRONZE –



TRADITIONAL
PATH LIGHT
TS-B301

Overall Height: 22-1/4"
Lumens: 300



CLASSIC
PATH LIGHT
TS-B302

Overall Height: 23-1/4"
Lumens: 300



MODERN
PATH LIGHT
TS-B306

Overall Height: 21-1/4"
Lumens: 300

Elegant & Stylish Path Lights

Our professional grade LED landscape path lights are a solid heavy-duty brass fixture used to highlight walkways, pathways and themed areas. Our path lights feature a stylish designed head with a 360 degree LED lamp for optimum light output and include a heavy-duty ground stake.

ITEMS INCLUDED:

- Silicone Wire Nuts
- G4 LED Lamp
- Lead Wire: 36"
- Heavy-duty 8" Ground Stake

LIGHTING SPECIFICATIONS:

- Construction: Solid Brass
- Finishes: Black or Bronze
- Light Source: G4 LED Lamp
- Light Beam: 360°
- Watts: 3W
- Color Temp (CCT): 2700K
- Voltage Range: 9V – 15V AC/DC
- Power Supply: 12V Low Voltage Transformer (Sold Separately)

ACCENT LIGHTS

– AVAILABLE IN BLACK OR BRONZE –



TRU
Tru-Scapes
Color Control
Option

**TRADITIONAL
ACCENT LIGHT
TS-B102**

Light Beam: 40°
Watts: 4W (MR16)
Lumens: 250



TRU
Tru-Scapes
Color Control
Option

**WALL WASH LIGHT
TS-B105**

Light Beam: 60°
Watts: 5.5W (MR16)
Lumens: 450



TRU
Tru-Scapes
Color Control
Option

**HIGH POWER
ACCENT LIGHT
TS-B106**

Light Beam: 120°
Watts: 8W (PAR36)
Lumens: 900

Heavy-duty Accent Lights

Professional grade low voltage LED landscape accent lights constructed of heavy-duty die-cast brass with a durable finish. Accent lights are commonly used to highlight trees, shrubs, walls or other focal points in the landscape. The accent lights feature a toolless knob to adjust fixture angle.



ITEMS INCLUDED:

- Silicone Wire Nuts
- LED Lamp
- Lead Wire: 36"
- Heavy-duty 8" Ground Stake

LIGHTING SPECIFICATIONS:

- Construction: Solid Brass
- Finishes: Black or Bronze
- Color Temp (CCT): 2700K
- Voltage Range: 9V – 15V AC/DC
- Power Supply: 12V Low Voltage Transformer (Sold Separately)

ACCESSORIES



150W: TS-TSSP-150
300W: TS-TSSP-300

150W & 300W SS TRANSFORMER

Max Input: 120VAC, 50/60Hz
Output Voltage: 12V AC
Heavy-duty 304 Stainless Steel



TS-TSST-75

75W SS TRANSFORMER

Input: 120VAC, 50/60Hz
Output Voltage: 9V – 15V AC
Includes Built-in Mechanical Timer
Dimensions: 4.3"(W) x 6.7"(H) x 4.3"(D)



TS-TBPT-100

100W ECONOMY TRANSFORMER

Simple Photocell Control



9': TS-TPHOT09
15': TS-TPHOT0

PHOTOCELL

Stem and swivel mount plug-in photocell with 9 in. or 15 ft. lead wire. Compatible with all Tru-Scapes SS Transformers.



TS-TIMER

DIGITAL TIMER

Compatible with all Tru-Scapes SS Transformers

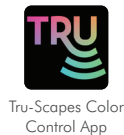


TS-122G250-EZ

DIRECT BURIAL LOW VOLTAGE WIRE

250ft Spool of 12/2 CCA Direct Burial Wire in an EZ-Pull Box

Check out our website at www.tru-scapes.com for additional accessories.



NEW TRU-SCAPES COLOR CONTROL

Tru-Scapes fixtures and lamps with App control are now available – offering RGB Color control as well as Kelvin (Warm - Cool White), Dimming, and Zone control via Bluetooth connection from your device.

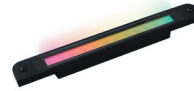


Hardscape LED Module

TS-A6000-RBULB

Fits All TS-A6000 Models

Power: 1W LED
CCT: 2700K/4000K
Lumens: 75/78



Hardscape RGBCW Module

TS-A6000C-RBULB

Fits All TS-A6000 Models

Power: 1W LED
CCT: 2200K – 6500K
Lumens: Variable/Dimming



Tru-Scapes
Color Control



G4 Lamp

TS-360G4-1

Power: 3W LED
CCT: 2700K
Beam: 360°
Lumens: 300



MR16 Lamps

**4W: TS-40MR16
5.5W: TS-60MR16**

Power: 4W OR 5.5W LED
CCT: 2700K
Beam: 4W - 40° – Lumens: 250
Beam: 5.5W - 60° – Lumens: 450



MR16 RGBCW Lamp

TS-40MR16-C

Fits TS-B102 & TS-B203

Power: 6W RGBCW LED
CCT: 2200K – 6500K
Lumens: 370 at 2700K



Tru-Scapes
Color Control



PAR36 Lamp

TS-120PAR36

Power: 8W LED
CCT: 2700K
Beam: 120°
Lumens: 900



PAR36 RGBCW Lamp

TS-120PAR36-C

Fits TS-B106 & TS-B201

Power: 8W LED
CCT: 2200K – 6500K
Lumens: 680 at 2700K



Tru-Scapes
Color Control

LIMITED WARRANTIES

Tru-Scapes® Landscape Lighting warrants that its products will be free from defects in workmanship and materials for five (5) years to the original purchaser. Warranty coverage requires receipt of purchase. Exceptions to our warranty as follows:

- Tru-Scapes Light fixtures warranty is only valid when using a Tru-Scapes transformer.
- Light fixtures are warranted to original purchaser for 5 years from date of purchase; Light sockets and fixture housing on all fixtures are warranted for life to the original purchaser.
- All Tru-Scapes Transformers are under warranty for 5 years from original date of purchase to the original purchaser. Warranty does not cover unusual acts of nature such as lightning strikes and power surges.
- Tru-Scapes LED Bulbs are warranted for five (5) years or 30,000 hours, whichever comes first to the original purchaser.
- Exterior black powder coat finishes are warranted for 5 years for chipping and flaking to the original purchaser.
- Natural patina on all brass fixtures is natural and normally occurring and not covered under any warranty. Cleaning of fixtures using a soft cloth towel with a cleaner is recommended to restore the finish.
- Tru-Scapes® warranties do not cover plants that die or burn because of continuous light shined on them. Certain acid-loving plants such as arborvitae, pine trees, and others should not be exposed to light of any kind for more than 18 hours a day as these plants need time to sleep and allow photosynthesis to naturally occur.

Contact your dealer for more information.



TRU-SCAPES®
LANDSCAPE LIGHTING

Tru-Scapes Landscape Lighting, Southeastern PA

www.tru-scapes.com | www.belgard.com/lighting | [f](#) [@](#)